


The CoastWatch Utilities: Ten Years in the Making

Peter Hollemans,  Terrenus Earth Sciences Consultant for
NOAA/NESDIS

CoastWatch Operations Managers Meeting, June, 2007

Talk Outline

- About the Utilities
- Current Release
- Future Releases

Historical Timeline



About the Utilities

Current Release

Future Releases

1997	v1.0, internal release, La Jolla lab
1998	v2.0, public release, West Coast website
1999	v2.2/3, Caribbean website
2000	v2.4, Gulf of Mexico website
2001	v3.1.0, Java version, CDAT beta release in C
2002	v3.1.1/2, reprojection and rendering
2003	v3.1.3/4/5/6, NOAA Ib, math, GeoTIFF
2004	v3.1.7/8/9, new CDAT, install wizard, autonav
2005	v3.2.0, OPeNDAP, datum shifts
2006	v3.2.1, GUI updates, units, expression masks
2007	v3.2.2-pre, navigation analysis, GRIB data

User Groups



About the Utilities

Current Release

Future Releases

- NOAA/NESDIS researchers: verify products, web page images, analysis
- Academic researchers: data conversion, analysis, comparison to biological data
- Casual and commercial users: fishing, weather, redistribution

Home Page



About the
Utilities

Current
Release

Future
Releases

- [coastwatch.noaa.gov/
cw_cwfv3.html](http://coastwatch.noaa.gov/cw_cwfv3.html)
- Installation packages,
documentation
- Errata, prereleases

Development



About the Utilities

Current Release

Future Releases

- New versions released every 4-6 months
- Major feature requests from NESDIS (approval and funding)
- Minor feature requests from users
- Bug fixes (normally minor) are an ongoing task

Documentation



About the Utilities

Current Release

Future Releases

- Data users: User's guide, help menus
- Software developers: Java API in HTML (Javadoc), user's guide chapter (coming soon)
- Data providers: User's guide appendices on supported formats & metadata

New Features (3.2.1)

About the
Utilities



**Current
Release**

Future
Releases

- Java now included
- Units conversion
- GUI updates
- Context help buttons
- Expression masking

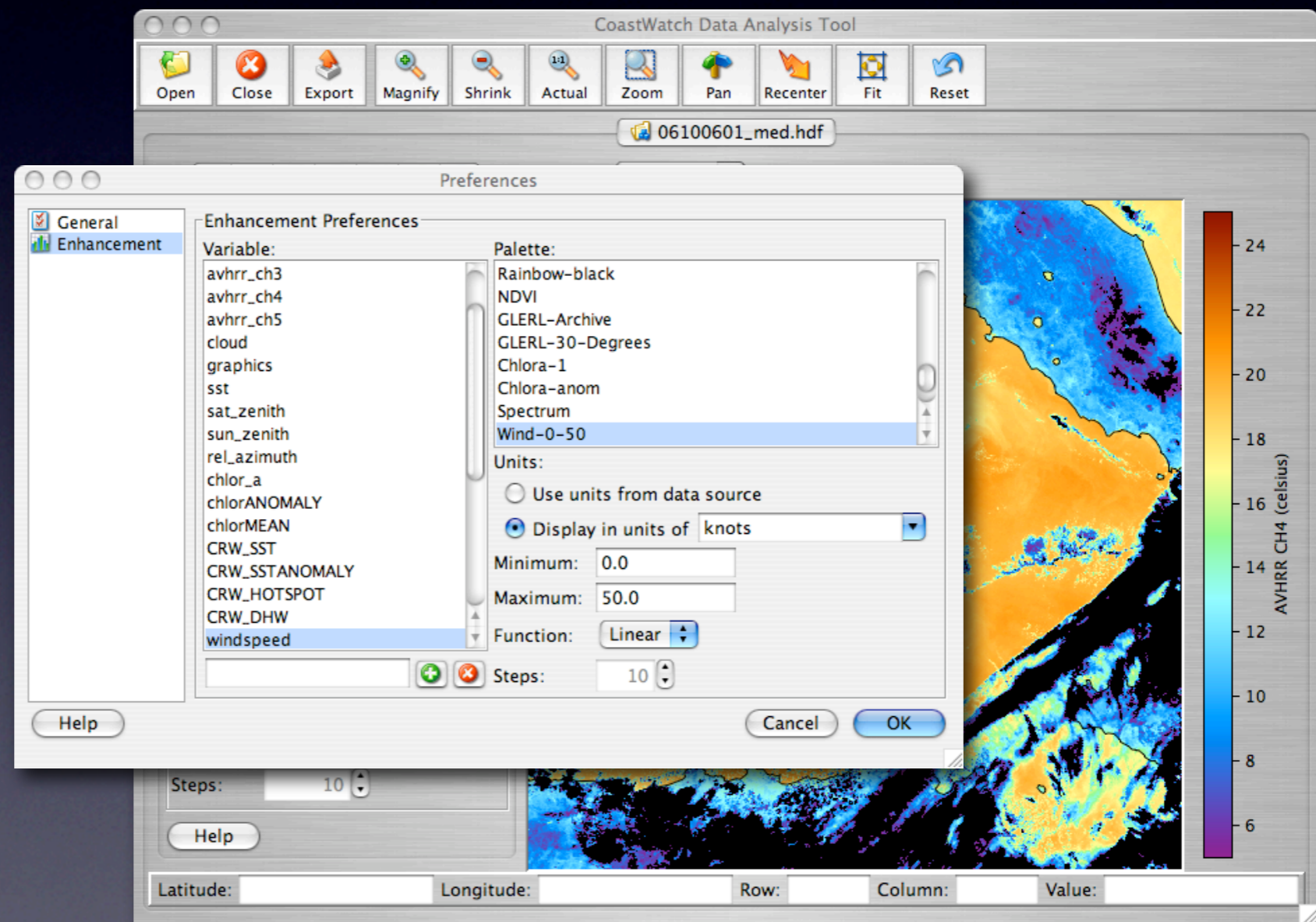
New Features (continued ...)

About the
Utilities



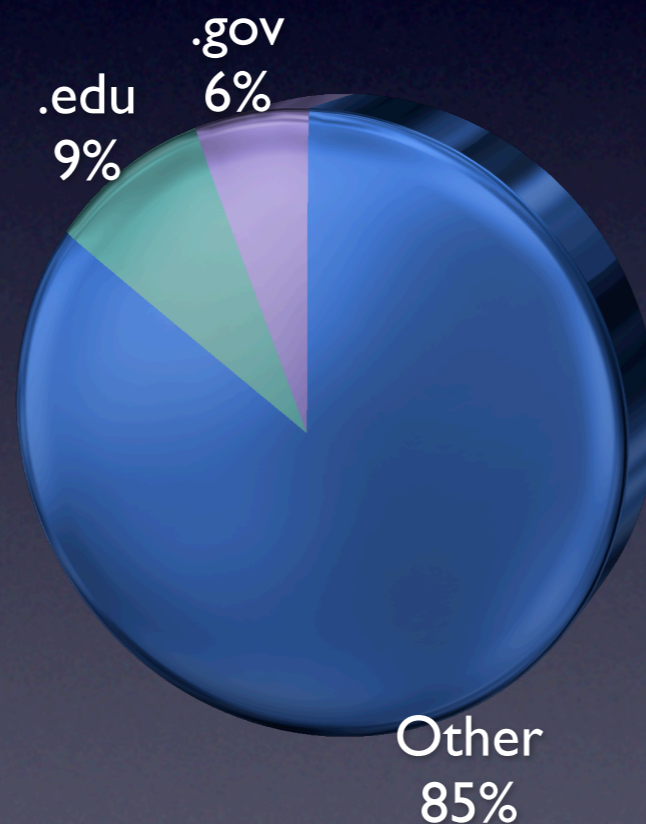
Current
Release

Future
Releases

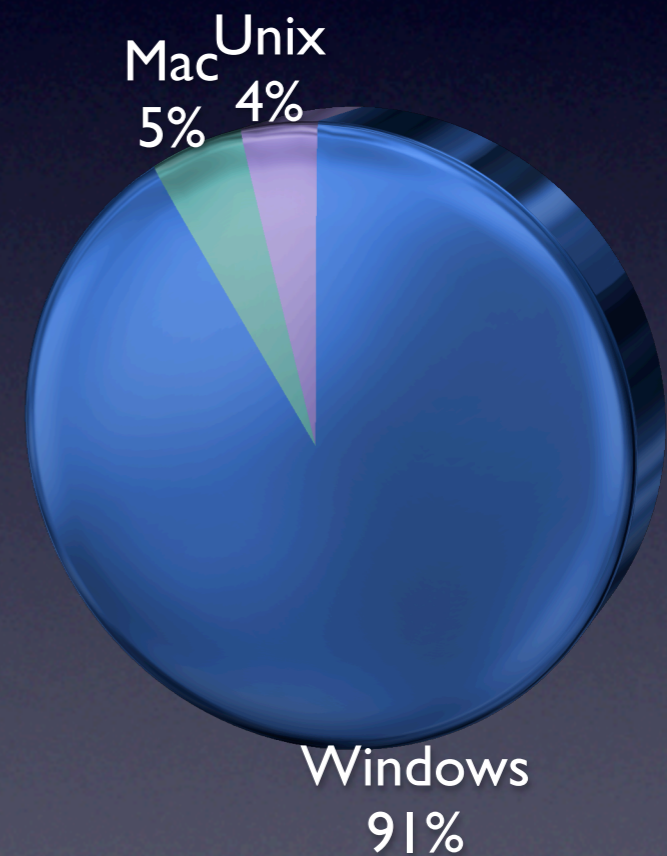


User Distributions

Network Domain



Operating System



About the Utilities

Current Release

Future Releases



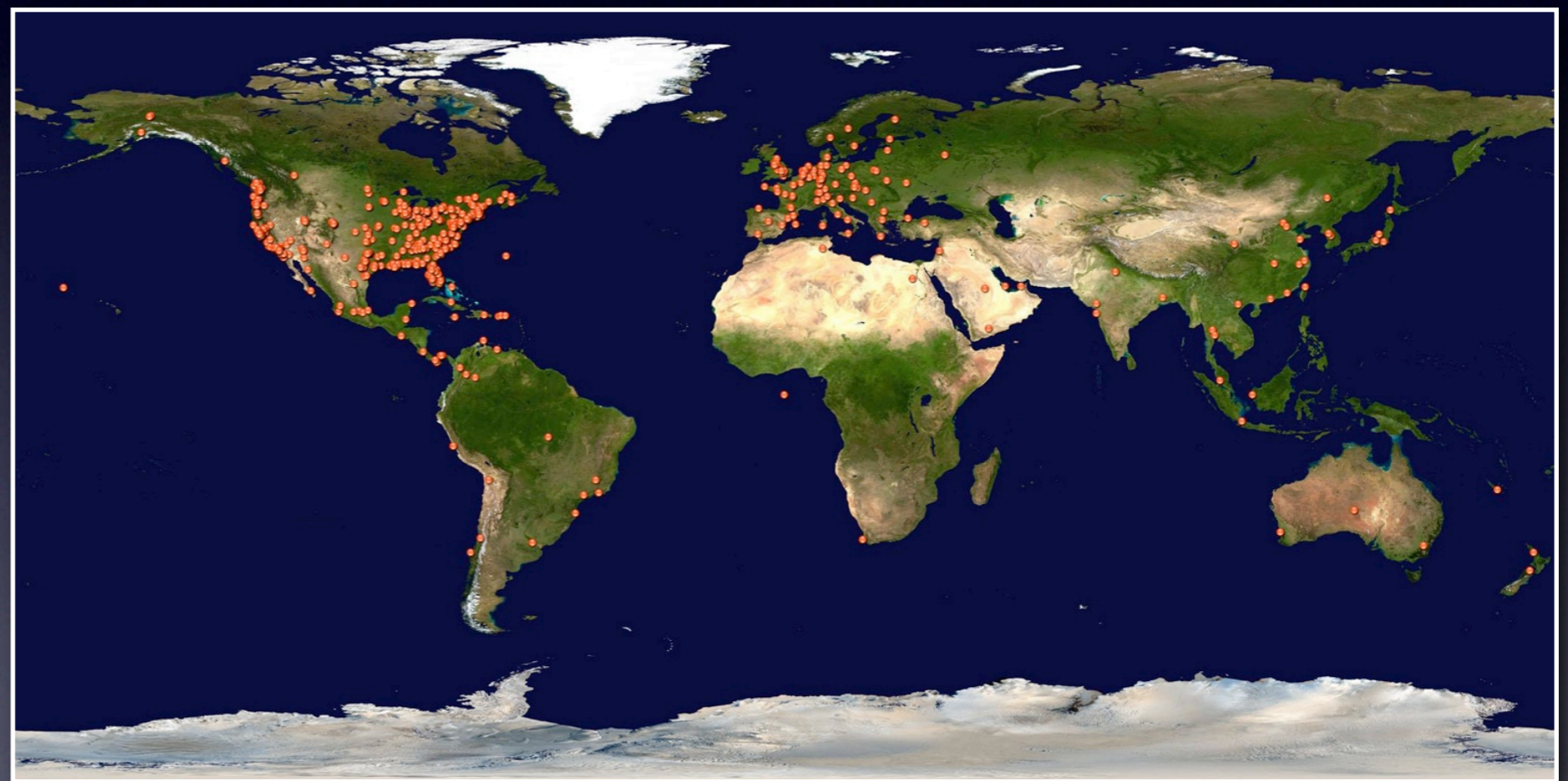
User Distributions (continued ...)

Geographic Location

About the
Utilities

Current
Release

Future
Releases



User Installations

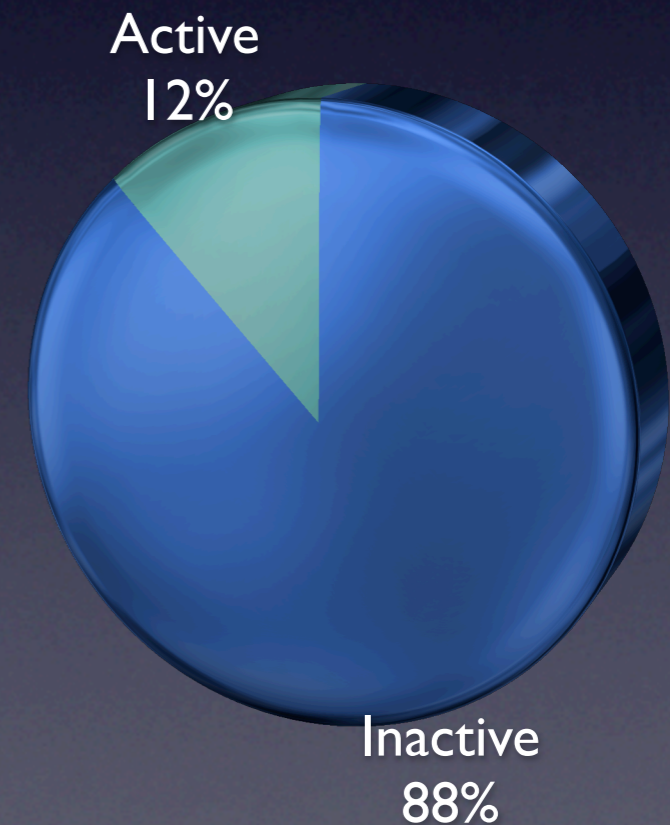
About the
Utilities



**Current
Release**

Future
Releases

- Total of 1953 users since April 2006 (~140 new users per month)
- Many more users installing than actively using:



Current Development (3.2.2)

About the
Utilities

Current
Release

 **Future
Releases**

- CDAT chapter in user's guide
- Developers chapter in user's guide
- Support for GRIB data
- Bug fixes

Feature Ideas

About the
Utilities

Current
Release



**Future
Releases**

- Full screen viewing mode
- Google Earth KML output
- Vector data & time series display
- ESRI shape file point display

Feature Ideas (continued...)

About the
Utilities

Current
Release

 **Future
Releases**

- Intelligent data import wizard
- Support for CF 3D/4D datasets (multi-level, multi-timestep)
- Easier integration of user programs & data formats
- Generic shape import in XML
- Scriptable operations in CDAT

Summary

- About the Utilities: history, users, web site, development, docs
- Current Release: new features, current user stats
- Future Releases: development for 3.2.2, feature ideas

Acknowledgements

- CoastWatch node and central operations staff
- CoastWatch data users